

Carey Rd between Ridgebank Cres and Roy Rd

March 11, 2019 To March 15, 2019



The data presented here is for information purposes only and should not be considered authoritative for construction, geotechnical, engineering, navigational, legal, or other site-specific uses. The information shared is owned by the Transportation Division of the Engineering Department at the District of Saanich. Accuracy is not guaranteed.

Start Date: 11-Mar-19
 Start Time: 0:01
 Station ID: C0011-07

Location 1: Carey Rd between Ridgebank Cres and Roy Rd
Note: Ridgebank Cres and Roy Rd

DATE:	March 11, 2019		March 12, 2019		March 13, 2019		March 14, 2019		March 15, 2019		WK AVG		WK AVG	HOURLY
	MON		TUE		WED		THURS		FRI		CH 1+2		%	
Time:	NB	SB	NB	SB	NB	SB	NB	SB	NB	SB	NB	SB		
12-1 AM			6	6	10	5	7	8			8	6	14	0.3%
1-2 AM			1	2	0	1	2	0			1	1	2	0.0%
2-3 AM			1	4	3	1	3	2			2	2	5	0.1%
3-4 AM			12	0	9	0	10	0			10	0	10	0.3%
4-5 AM			8	3	9	7	5	4			7	5	12	0.3%
5-6 AM			13	10	20	10	18	10			17	10	27	0.7%
6-7 AM			67	42	70	42	83	47			73	44	117	2.9%
7-8 AM			148	96	139	112	144	85			144	98	241	5.9%
8-9 AM			252	190	270	181	254	204			259	192	450	11.0%
9-10 AM			99	81	91	78	122	113			104	91	195	4.7%
10-11 AM			86	83	71	57	102	110			86	83	170	4.1%
11-12 PM			93	76	96	85	133	127			107	96	203	5.0%
12-1 PM			93	91	99	87	111	173			101	117	218	5.3%
1-2 PM			91	88	104	102	108	113			101	101	202	4.9%
2-3 PM			125	178	145	191	156	205			142	191	333	8.1%
3-4 PM			178	192	186	264	199	264			188	240	428	10.4%
4-5 PM			181	276	199	260	193	270			191	269	460	11.2%
5-6 PM			185	222	169	171	157	165			170	186	356	8.7%
6-7 PM			127	128	96	111	100	105			108	115	222	5.4%
7-8 PM			67	75	90	83	72	91			76	83	159	3.9%
8-9 PM			78	56	73	50	61	48			71	51	122	3.0%
9-10 PM			56	32	50	39	40	36			49	36	84	2.1%
10-11 PM			26	33	22	21	21	15			23	23	46	1.1%
11-12 AM			14	9	16	15	16	12			15	12	27	0.7%
LANES			2007	1973	2037	1973	2117	2207			2054	2051	4105	100.0%
TOTAL			3980		4010		4324				4110			
	MON		TUE		WED		THURS		FRI		WK AVG			

PEAK HOUR					TOTAL VEHICALS-PEAK PERIODS		2 HOUR PEAK INTERVALS				
MAX. 7 - 9 am PEAK HOUR	450	⇒	11.0%	between 8-9 AM	1929	⇒	6 HR TOTAL	2 HR AM (7 - 9 AM)			
MAX. 7 - 11 am PEAK HOUR	450	⇒	11.0%	between 8-9 AM	1508	⇒	4 HR TOTAL	VEH / HR	VEH / 2HR	2 HR %	
MAX. 11 am - 1 pm PEAK HOUR	218	⇒	5.3%	between 12-1 PM				7-8 AM	241	692	16.9%
MAX. 11 am - 3 pm PEAK HOUR	333	⇒	8.1%	between 2-3 PM				8-9 AM	450		
MAX. 4 - 6 pm PEAK HOUR	460	⇒	11.2%	between 4-5 PM				2 HR NOON (11 - 1 PM)			
MAX. 3 - 6 pm PEAK HOUR	460	⇒	11.2%	between 4-5 PM				VEH / HR	VEH / 2HR	2 HR %	
								11-12 PM	203	421	10.3%
								12-1 PM	218		
								2 HR PM (4 - 6 PM)			
								VEH / HR	VEH / 2HR	2 HR %	
								4-5 PM	460	816	19.9%
								5-6 PM	356		

Carey Rd between Ridgebank Cres and Roy Rd

Northbound

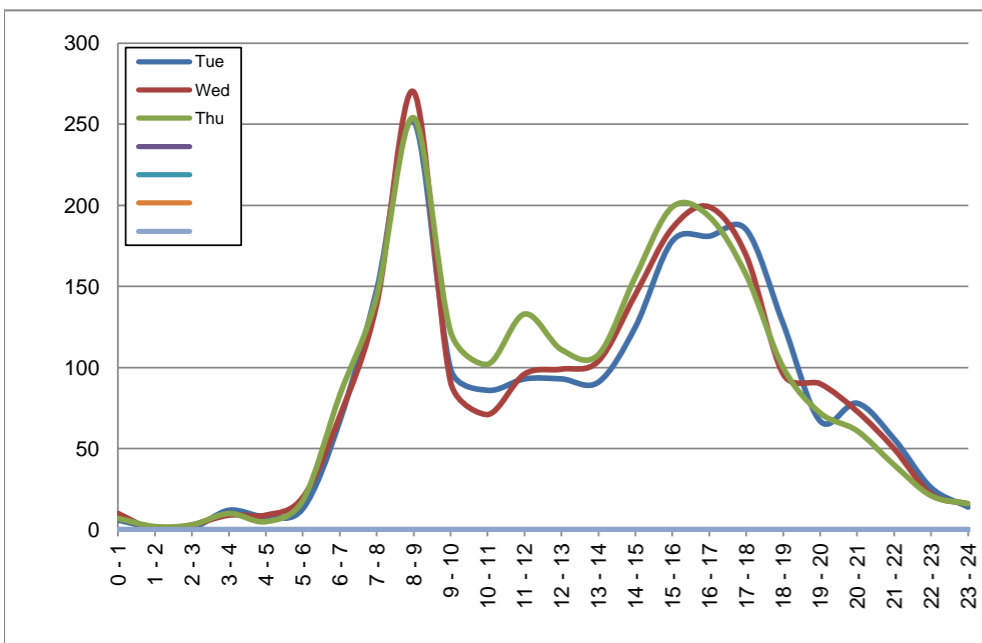
March 12, 2019 to March 14, 2019

Hourly Volumes

Time Period	Tue	Wed	Thu				
	Mar 12	Mar 13	Mar 14				
0 - 1	6	10	7				
1 - 2	1	0	2				
2 - 3	1	3	3				
3 - 4	12	9	10				
4 - 5	8	9	5				
5 - 6	13	20	18				
6 - 7	67	70	83				
7 - 8	148	139	144				
8 - 9	252	270	254				
9 - 10	99	91	122				
10 - 11	86	71	102				
11 - 12	93	96	133				
12 - 13	93	99	111				
13 - 14	91	104	108				
14 - 15	125	145	156				
15 - 16	178	186	199				
16 - 17	181	199	193				
17 - 18	185	169	157				
18 - 19	127	96	100				
19 - 20	67	90	72				
20 - 21	78	73	61				
21 - 22	56	50	40				
22 - 23	26	22	21				
23 - 24	14	16	16				
Day Total	2007	2037	2117				

15-Minute Volumes

Time Start	Tue	Wed	Thu				
	Mar 12	Mar 13	Mar 14				
0:00	5	5	4				
0:15	0	1	2				
0:30	1	3	0				
0:45	0	1	1				
1:00	0	0	1				
1:15	0	0	0				
1:30	1	0	1				
1:45	0	0	0				
2:00	0	1	0				
2:15	1	0	1				
2:30	0	1	2				
2:45	0	1	0				
3:00	0	0	0				
3:15	1	0	2				
3:30	3	4	2				
3:45	8	5	6				
4:00	1	4	4				
4:15	2	2	0				
4:30	2	1	1				
4:45	3	2	0				
5:00	1	3	2				
5:15	1	0	1				
5:30	3	7	6				
5:45	8	10	9				
6:00	8	10	9				
6:15	15	20	26				
6:30	21	18	21				
6:45	23	22	27				
7:00	25	30	26				
7:15	41	33	39				
7:30	38	24	30				
7:45	44	52	49				
8:00	46	54	65				
8:15	58	77	58				
8:30	92	87	80				
8:45	56	52	51				
9:00	38	27	35				
9:15	23	33	39				
9:30	17	20	20				
9:45	21	11	28				
10:00	23	23	18				
10:15	16	13	27				
10:30	20	17	23				
10:45	27	18	34				
11:00	17	27	30				
11:15	24	25	40				
11:30	28	23	37				
11:45	24	21	26				
12:00	27	24	29				
12:15	23	27	24				
12:30	26	25	31				
12:45	17	23	27				
13:00	22	24	32				
13:15	28	28	29				
13:30	19	22	23				
13:45	22	30	24				
14:00	30	37	31				
14:15	26	31	37				
14:30	32	45	39				
14:45	37	32	49				
15:00	37	51	52				
15:15	53	51	61				
15:30	44	48	47				
15:45	44	36	39				
16:00	41	50	45				
16:15	48	54	47				
16:30	43	53	42				
16:45	49	42	59				
17:00	49	52	45				
17:15	60	46	49				
17:30	42	34	28				
17:45	34	37	35				
18:00	25	22	22				
18:15	47	22	34				
18:30	30	29	25				
18:45	25	23	19				
19:00	17	20	18				
19:15	16	22	23				
19:30	12	21	15				
19:45	22	27	16				
20:00	13	21	13				
20:15	24	19	21				
20:30	26	17	14				
20:45	15	16	13				
21:00	23	12	16				
21:15	12	18	8				
21:30	7	10	10				
21:45	14	10	6				
22:00	12	7	3				
22:15	7	8	6				
22:30	2	5	4				
22:45	5	2	8				
23:00	10	7	4				
23:15	1	6	3				
23:30	2	2	4				
23:45	1	1	5				



Site notes:

Carey Rd between Ridgebank Cres and Roy Rd

Southbound

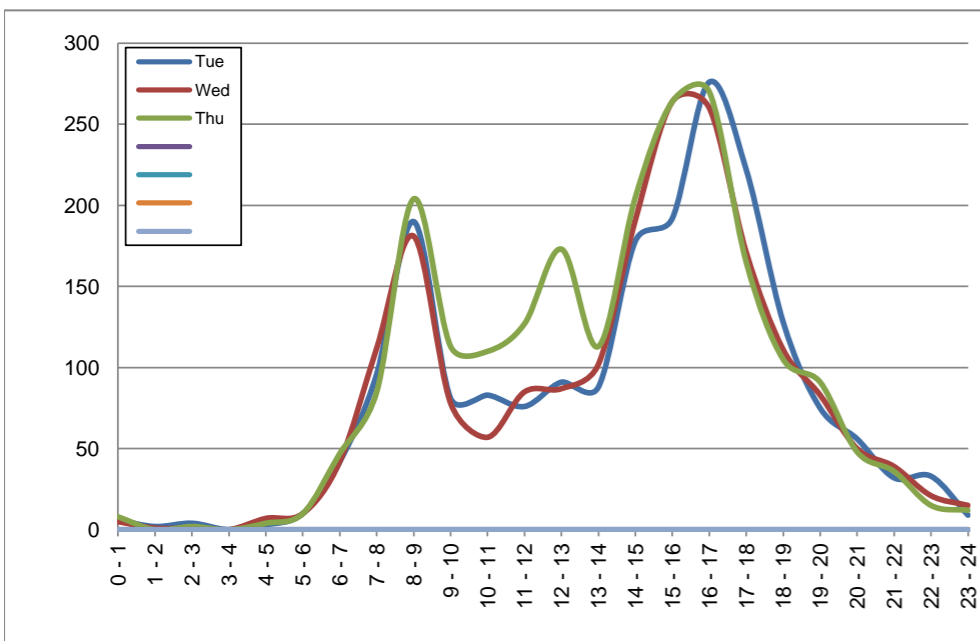
March 12, 2019 to March 14, 2019

Hourly Volumes

Time Period	Tue	Wed	Thu				
	Mar 12	Mar 13	Mar 14				
0 - 1	6	5	8				
1 - 2	2	1	0				
2 - 3	4	1	2				
3 - 4	0	0	0				
4 - 5	3	7	4				
5 - 6	10	10	10				
6 - 7	42	42	47				
7 - 8	96	112	85				
8 - 9	190	181	204				
9 - 10	81	78	113				
10 - 11	83	57	110				
11 - 12	76	85	127				
12 - 13	91	87	173				
13 - 14	88	102	113				
14 - 15	178	191	205				
15 - 16	192	264	264				
16 - 17	276	260	270				
17 - 18	222	171	165				
18 - 19	128	111	105				
19 - 20	75	83	91				
20 - 21	56	50	48				
21 - 22	32	39	36				
22 - 23	33	21	15				
23 - 24	9	15	12				
Day Total	1973	1973	2207				

15-Minute Volumes

Time Start	Tue	Wed	Thu				
	Mar 12	Mar 13	Mar 14				
0:00	4	4	3				
0:15	0	1	0				
0:30	2	0	4				
0:45	0	0	1				
1:00	0	0	0				
1:15	0	1	0				
1:30	0	0	0				
1:45	2	0	0				
2:00	0	0	2				
2:15	2	0	0				
2:30	2	1	0				
2:45	0	0	0				
3:00	0	0	0				
3:15	0	0	0				
3:30	0	0	0				
3:45	0	0	0				
4:00	0	1	2				
4:15	0	1	1				
4:30	2	3	0				
4:45	1	2	1				
5:00	0	1	1				
5:15	0	1	4				
5:30	2	3	1				
5:45	8	5	4				
6:00	5	3	6				
6:15	10	12	7				
6:30	9	10	17				
6:45	18	17	17				
7:00	17	18	17				
7:15	20	24	16				
7:30	28	35	22				
7:45	31	35	30				
8:00	42	31	47				
8:15	49	46	51				
8:30	51	51	49				
8:45	48	53	57				
9:00	30	30	37				
9:15	21	16	28				
9:30	13	11	21				
9:45	17	21	27				
10:00	9	11	45				
10:15	27	18	26				
10:30	23	17	18				
10:45	24	11	21				
11:00	19	14	14				
11:15	14	16	23				
11:30	20	28	31				
11:45	23	27	59				
12:00	22	13	56				
12:15	26	28	32				
12:30	24	16	56				
12:45	19	30	29				
13:00	24	28	50				
13:15	24	31	21				
13:30	22	25	23				
13:45	18	18	19				
14:00	33	29	26				
14:15	27	26	35				
14:30	53	59	69				
14:45	65	77	75				
15:00	43	59	52				
15:15	46	70	61				
15:30	56	71	73				
15:45	47	64	78				
16:00	74	60	68				
16:15	69	78	81				
16:30	71	55	59				
16:45	62	67	62				
17:00	66	50	56				
17:15	54	49	45				
17:30	55	49	39				
17:45	47	23	25				
18:00	35	30	32				
18:15	51	34	23				
18:30	23	20	34				
18:45	19	27	16				
19:00	19	31	32				
19:15	18	25	18				
19:30	25	16	26				
19:45	13	11	15				
20:00	13	15	16				
20:15	21	10	9				
20:30	12	18	16				
20:45	10	7	7				
21:00	12	12	13				
21:15	6	13	6				
21:30	8	8	12				
21:45	6	6	5				
22:00	14	3	3				
22:15	11	7	2				
22:30	5	4	6				
22:45	3	7	4				
23:00	3	6	3				
23:15	4	3	5				
23:30	1	5	3				
23:45	1	1	1				



Site notes:

Vehicle Speed Summary

Saanich Engineering Department

Count Id: [C0011-07](#)

Filename: [Carey Rd between Ridgebank Cres and Roy Rd-Mar-2019.xlsm](#)

Location: Carey Rd between Ridgebank Cres and Roy Rd

Note: Ridgebank Cres and Roy Rd

Direction: **North-South**

Dates: **March 11, 2019 To March 15, 2019**

Filtered data

AVG. SPEED	27 mph	44 km/h
50 % SPEED	28 mph	45 km/h
85 % SPEED	33 mph	54 km/h
95 % SPEED	36 mph	59 km/h

Location Map



Carey Rd between Ridgebank Cres and Roy Rd

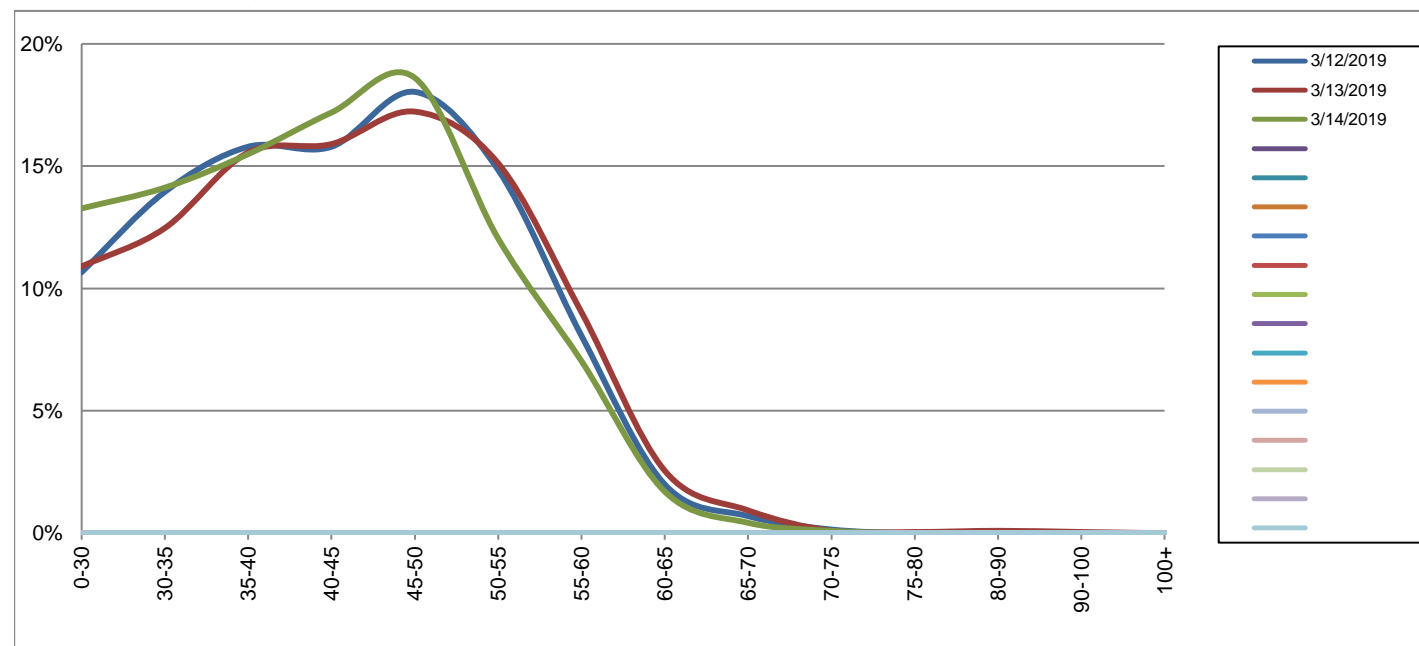
Northbound

March 12, 2019 to March 14, 2019

Daily Speed Bin Percentages															Daily Speed Bin Volumes														Total	Avg.
Bin #	1	2	3	4	5	6	7	8	9	10	11	12	13	14	1	2	3	4	5	6	7	8	9	10	11	12	13	14	Volume	Speed
Bin Speeds	0-30	30-35	35-40	40-45	45-50	50-55	55-60	60-65	65-70	70-75	75-80	80-90	90-100	100+	0-30	30-35	35-40	40-45	45-50	50-55	55-60	60-65	65-70	70-75	75-80	80-90	90-100	100+		
3/12/2019	10.7%	14.0%	15.8%	15.8%	18.0%	14.8%	8.1%	2.0%	0.7%	0.1%	0.0%	0.0%	0.0%	0.0%	214	280	317	317	362	298	162	40	14	3	0	0	0	0	2007	42
3/13/2019	10.9%	12.5%	15.6%	15.9%	17.2%	15.1%	9.0%	2.6%	0.9%	0.1%	0.0%	0.1%	0.0%	0.0%	222	254	317	324	351	308	184	52	19	2	1	2	1	0	2037	42
3/14/2019	13.3%	14.1%	15.5%	17.2%	18.6%	12.0%	7.0%	1.7%	0.4%	0.1%	0.0%	0.0%	0.0%	0.0%	281	299	328	364	394	255	149	36	9	2	0	0	0	0	2117	40
Total	11.6%	13.5%	15.6%	16.3%	18.0%	14.0%	8.0%	2.1%	0.7%	0.1%	0.0%	0.0%	0.0%	0.0%	717	833	962	1005	1107	861	495	128	42	7	1	2	1	0	6161	41

Speed Data Summary

Bin #	1	2	3	4	5	6	7	8	9	10	11	12	13	14	Total
Bin Speeds	0-30	30-35	35-40	40-45	45-50	50-55	55-60	60-65	65-70	70-75	75-80	80-90	90-100	100+	
Survey Total	717	833	962	1005	1107	861	495	128	42	7	1	2	1	0	6161
% Total	11.6%	13.5%	15.6%	16.3%	18.0%	14.0%	8.0%	2.1%	0.7%	0.1%	0.0%	0.0%	0.0%	0.0%	100%
Accumulated %	11.6%	25.2%	40.8%	57.1%	75.1%	89.0%	97.1%	99.1%	99.8%	99.9%	100.0%	100.0%	100.0%	100%	
Inverse Accum. %	88.4%	74.8%	59.2%	42.9%	24.9%	11.0%	2.9%	0.9%	0.2%	0.1%	0.0%	0.0%	0.0%	0.0%	
Average Speed	41 KM/H														



Site notes:

Carey Rd between Ridgebank Cres and Roy Rd

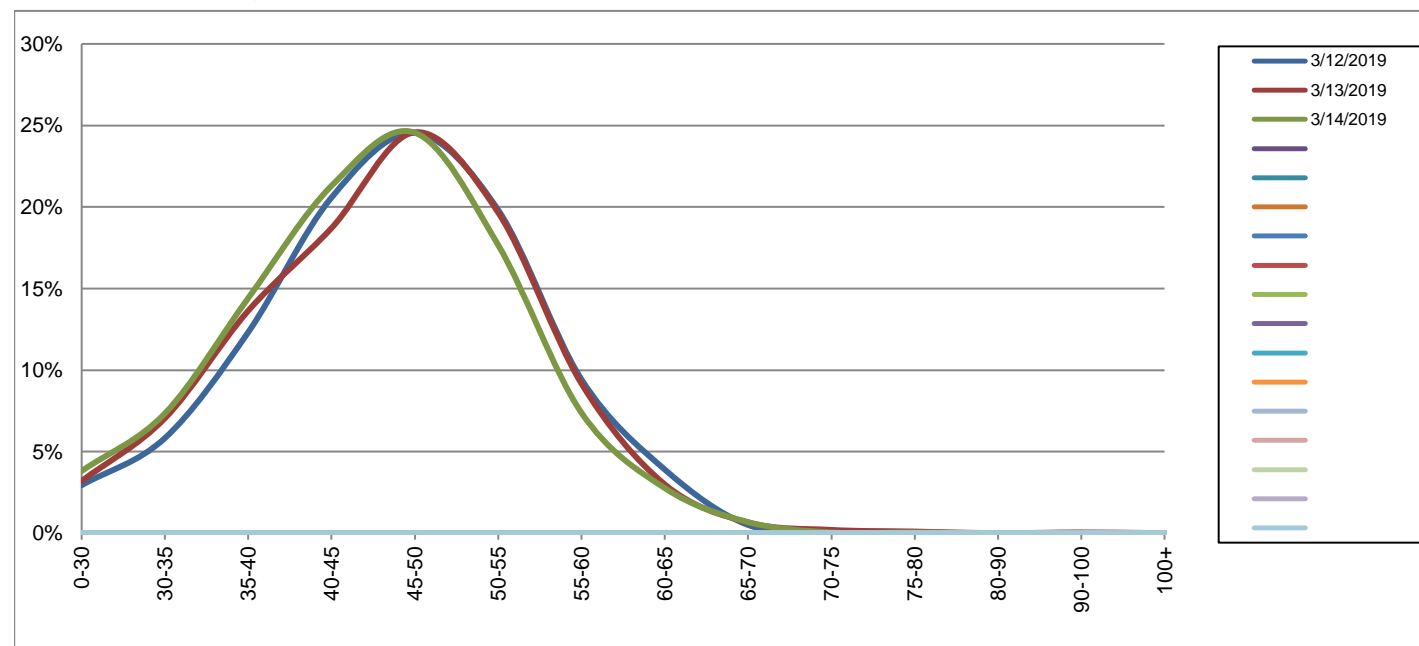
Southbound

March 12, 2019 to March 14, 2019

Daily Speed Bin Percentages															Daily Speed Bin Volumes														Total	Avg.
Bin #	1	2	3	4	5	6	7	8	9	10	11	12	13	14	1	2	3	4	5	6	7	8	9	10	11	12	13	14	Volume	Speed
Bin Speeds	0-30	30-35	35-40	40-45	45-50	50-55	55-60	60-65	65-70	70-75	75-80	80-90	90-100	100+	0-30	30-35	35-40	40-45	45-50	50-55	55-60	60-65	65-70	70-75	75-80	80-90	90-100	100+		
3/12/2019	2.9%	5.8%	12.3%	20.6%	24.5%	19.8%	9.4%	3.9%	0.5%	0.1%	0.1%	0.0%	0.0%	0.0%	58	115	243	406	484	391	186	77	10	2	1	0	0	0	1973	46
3/13/2019	3.2%	7.0%	13.6%	18.7%	24.6%	19.7%	9.2%	3.0%	0.7%	0.2%	0.1%	0.0%	0.1%	0.0%	63	139	269	369	485	388	181	59	13	4	2	0	1	0	1973	46
3/14/2019	3.8%	7.3%	14.4%	21.3%	24.6%	17.7%	7.4%	2.8%	0.7%	0.0%	0.0%	0.0%	0.0%	0.0%	84	162	318	470	542	390	163	61	15	1	1	0	0	0	2207	45
Total	3.3%	6.8%	13.5%	20.2%	24.6%	19.0%	8.6%	3.2%	0.6%	0.1%	0.1%	0.0%	0.0%	0.0%	205	416	830	1245	1511	1169	530	197	38	7	4	0	1	0	6153	46

Speed Data Summary

Bin #	1	2	3	4	5	6	7	8	9	10	11	12	13	14	Total
Bin Speeds	0-30	30-35	35-40	40-45	45-50	50-55	55-60	60-65	65-70	70-75	75-80	80-90	90-100	100+	
Survey Total	205	416	830	1245	1511	1169	530	197	38	7	4	0	1	0	6153
% Total	3.3%	6.8%	13.5%	20.2%	24.6%	19.0%	8.6%	3.2%	0.6%	0.1%	0.1%	0.0%	0.0%	0.0%	100%
Accumulated %	3.3%	10.1%	23.6%	43.8%	68.4%	87.4%	96.0%	99.2%	99.8%	99.9%	100.0%	100.0%	100.0%	100%	
Inverse Accum. %	96.7%	89.9%	76.4%	56.2%	31.6%	12.6%	4.0%	0.8%	0.2%	0.1%	0.0%	0.0%	0.0%	0.0%	
Average Speed	46 KM/H														



Site notes:

Carey Rd between Ridgebank Cres and Roy Rd

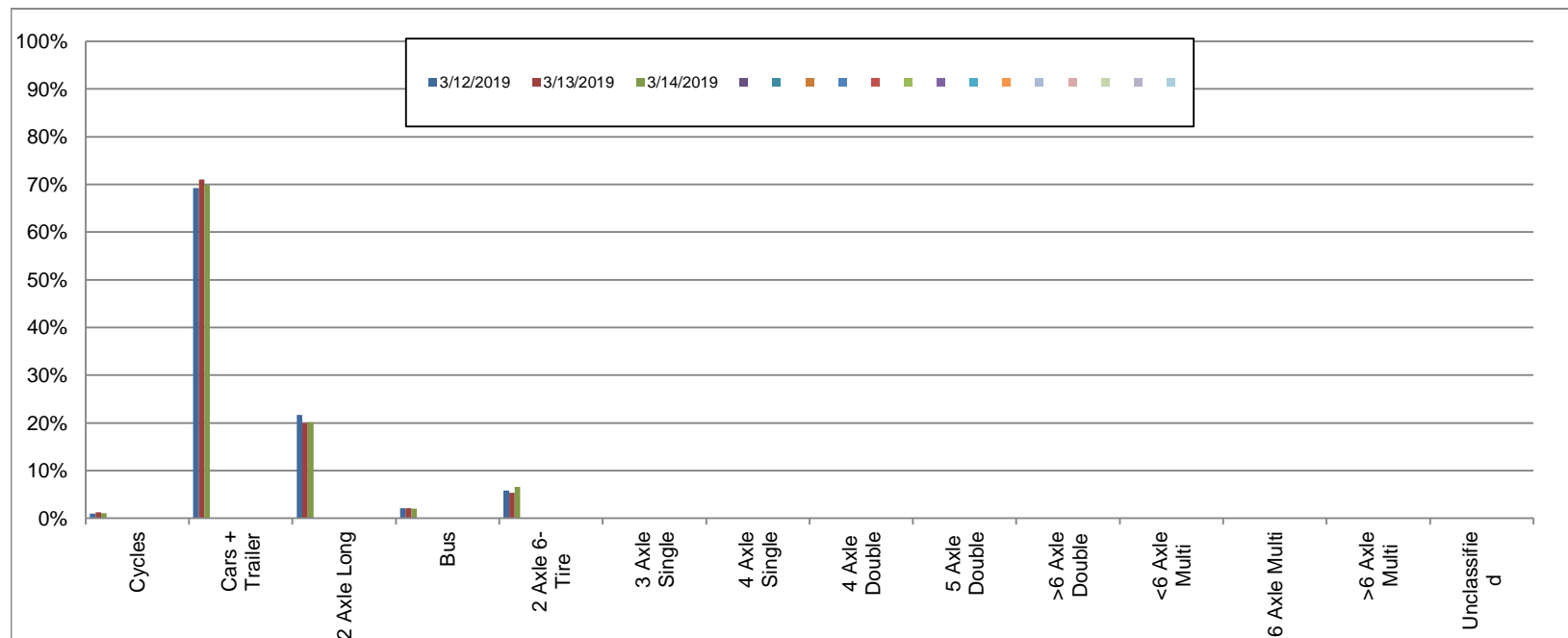
Northbound

March 12, 2019 to March 14, 2019

Daily Class Bin Percentages															Daily Class Bin Volumes															
Bin #	1	2	3	4	5	6	7	8	9	10	11	12	13	14	1	2	3	4	5	6	7	8	9	10	11	12	13	14	Total Volume	
Bin Class	Cycles	Cars + Trailer	2 Axle Long	Bus	2 Axle 6-Tire	3 Axle Single	4 Axle Single	4 Axle Double	5 Axle Double	>6 Axle Double	<6 Axle Multi	6 Axle Multi	>6 Axle Multi	Unclassified	Cycles	Cars + Trailer	2 Axle Long	Bus	2 Axle 6-Tire	3 Axle Single	4 Axle Single	4 Axle Double	5 Axle Double	>6 Axle Double	<6 Axle Multi	6 Axle Multi	>6 Axle Multi	Unclassified		
3/12/2019	0.9%	69.3%	21.7%	2.1%	5.8%	0.0%	0.0%	0.1%	0.0%	0.0%	0.0%	0.0%	0.0%	0.0%	19	1390	435	42	117	0	0	3	0	0	0	0	0	0	1	2007
3/13/2019	1.2%	71.1%	19.9%	2.1%	5.4%	0.0%	0.0%	0.1%	0.0%	0.0%	0.0%	0.0%	0.0%	0.1%	25	1448	406	43	109	1	0	2	0	0	0	0	0	0	3	2037
3/14/2019	1.0%	69.9%	20.2%	2.0%	6.6%	0.1%	0.0%	0.1%	0.0%	0.0%	0.0%	0.0%	0.0%	0.1%	22	1480	427	42	139	2	1	2	0	0	0	0	0	2	2117	
Total	1.1%	70.1%	20.6%	2.1%	5.9%	0.0%	0.0%	0.1%	0.0%	0.0%	0.0%	0.0%	0.0%	0.1%	66	4318	1268	127	365	3	1	7	0	0	0	0	0	6	6161	

Class Data Summary

Bin #	1	2	3	4	5	6	7	8	9	10	11	12	13	14	Total Volume
Bin Class	Cycles	Cars + Trailer	2 Axle Long	Bus	2 Axle 6-Tire	3 Axle Single	4 Axle Single	4 Axle Double	5 Axle Double	>6 Axle Double	<6 Axle Multi	6 Axle Multi	>6 Axle Multi	Unclassified	Total Volume
Survey Total	66	4318	1268	127	365	3	1	7	0	0	0	0	0	6	6161
% Total	1.1%	70.1%	20.6%	2.1%	5.9%	0.0%	0.0%	0.1%	0.0%	0.0%	0.0%	0.0%	0.0%	0.1%	100%
Accumulated %	1.1%	71.2%	91.7%	93.8%	99.7%	99.8%	99.8%	99.9%	99.9%	99.9%	99.9%	99.9%	99.9%	100.0%	
Inv. Accum. %	98.9%	28.8%	8.3%	6.2%	0.3%	0.2%	0.2%	0.1%	0.1%	0.1%	0.1%	0.1%	0.1%	0.0%	



Classification Descriptions

Bin #	Bin Description
1	Motorcycles
2	Passenger cars, including those with recreational trailers
3	2-axle pick-ups, vans, and RVs, including those with recreational trailers
4	Buses
5	2-axle, 6-tire single units
6	3-axle single units
7	4-axle single units
8	3-axle or 4-axle double unit
9	5-axle double unit
10	6-, 7-, or 8-axle double unit
11	5-axle multiple unit
12	6-axle multiple unit
13	7-or-more-axle multiple unit
14	Vehicles that could not be classified

Site notes:

Carey Rd between Ridgebank Cres and Roy Rd

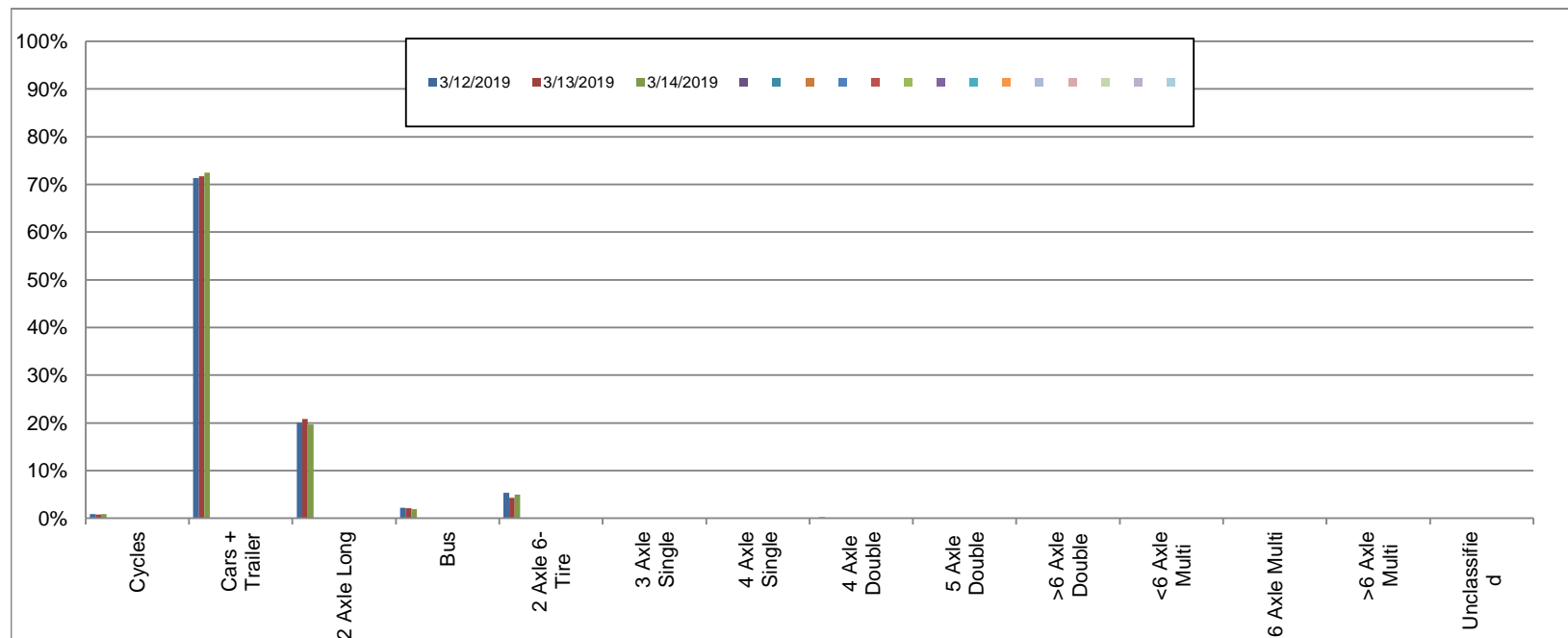
Southbound

March 12, 2019 to March 14, 2019

Daily Class Bin Percentages															Daily Class Bin Volumes														
Bin #	1	2	3	4	5	6	7	8	9	10	11	12	13	14	1	2	3	4	5	6	7	8	9	10	11	12	13	14	Total Volume
Bin Class	Cycles	Cars + Trailer	2 Axle Long	Bus	2 Axle 6-Tire	3 Axle Single	4 Axle Single	4 Axle Double	5 Axle Double	>6 Axle Double	<6 Axle Multi	6 Axle Multi	>6 Axle Multi	Unclassified	Cycles	Cars + Trailer	2 Axle Long	Bus	2 Axle 6-Tire	3 Axle Single	4 Axle Single	4 Axle Double	5 Axle Double	>6 Axle Double	<6 Axle Multi	6 Axle Multi	>6 Axle Multi	Unclassified	
3/12/2019	0.9%	71.3%	20.1%	2.2%	5.3%	0.2%	0.0%	0.1%	0.0%	0.0%	0.0%	0.0%	0.0%	0.0%	17	1407	396	44	105	3	0	1	0	0	0	0	0	0	1973
3/13/2019	0.8%	71.7%	20.8%	2.1%	4.3%	0.0%	0.0%	0.2%	0.0%	0.0%	0.0%	0.0%	0.0%	0.1%	16	1415	411	42	84	0	0	4	0	0	0	0	0	1	1973
3/14/2019	0.9%	72.5%	19.7%	1.9%	4.9%	0.0%	0.0%	0.0%	0.0%	0.0%	0.0%	0.0%	0.0%	0.0%	19	1600	435	42	109	0	0	1	0	0	0	0	0	1	2207
Total	0.8%	71.9%	20.2%	2.1%	4.8%	0.0%	0.0%	0.1%	0.0%	0.0%	0.0%	0.0%	0.0%	0.0%	52	4422	1242	128	298	3	0	6	0	0	0	0	0	2	6153

Class Data Summary

Bin #	1	2	3	4	5	6	7	8	9	10	11	12	13	14	Total Volume
Bin Class	Cycles	Cars + Trailer	2 Axle Long	Bus	2 Axle 6-Tire	3 Axle Single	4 Axle Single	4 Axle Double	5 Axle Double	>6 Axle Double	<6 Axle Multi	6 Axle Multi	>6 Axle Multi	Unclassified	Total Volume
Survey Total	52	4422	1242	128	298	3	0	6	0	0	0	0	0	2	6153
% Total	0.8%	71.9%	20.2%	2.1%	4.8%	0.0%	0.0%	0.1%	0.0%	0.0%	0.0%	0.0%	0.0%	0.0%	100%
Accumulated %	0.8%	72.7%	92.9%	95.0%	99.8%	99.9%	99.9%	100.0%	100.0%	100.0%	100.0%	100.0%	100.0%	100.0%	
Inv. Accum. %	99.2%	27.3%	7.1%	5.0%	0.2%	0.1%	0.1%	0.0%	0.0%	0.0%	0.0%	0.0%	0.0%	0.0%	



Classification Descriptions

Bin #	Bin Description
1	Motorcycles
2	Passenger cars, including those with recreational trailers
3	2-axle pick-ups, vans, and RVs, including those with recreational trailers
4	Buses
5	2-axle, 6-tire single units
6	3-axle single units
7	4-axle single units
8	3-axle or 4-axle double unit
9	5-axle double unit
10	6-, 7-, or 8-axle double unit
11	5-axle multiple unit
12	6-axle multiple unit
13	7-or-more-axle multiple unit
14	Vehicles that could not be classified

Site notes: